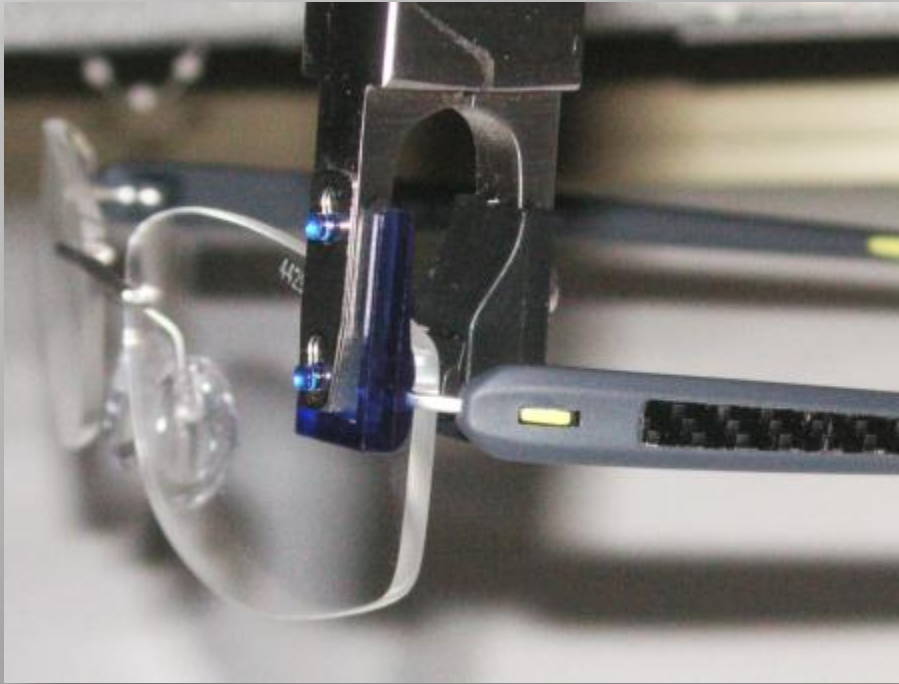


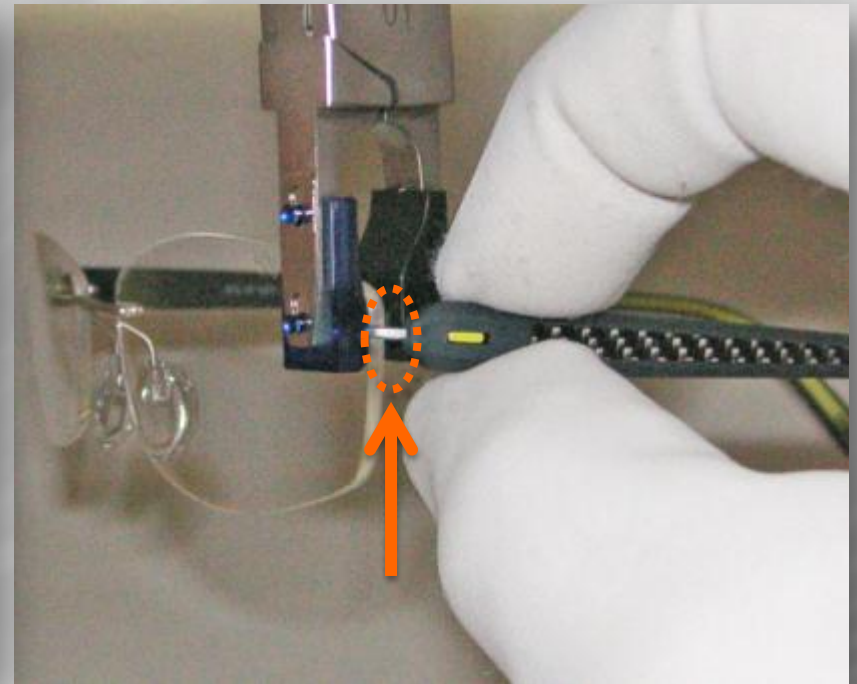
Technical Instructions

Carbon T1

Inclination



Hold lens fixation in position with mounting pliers.
Open temple completely.

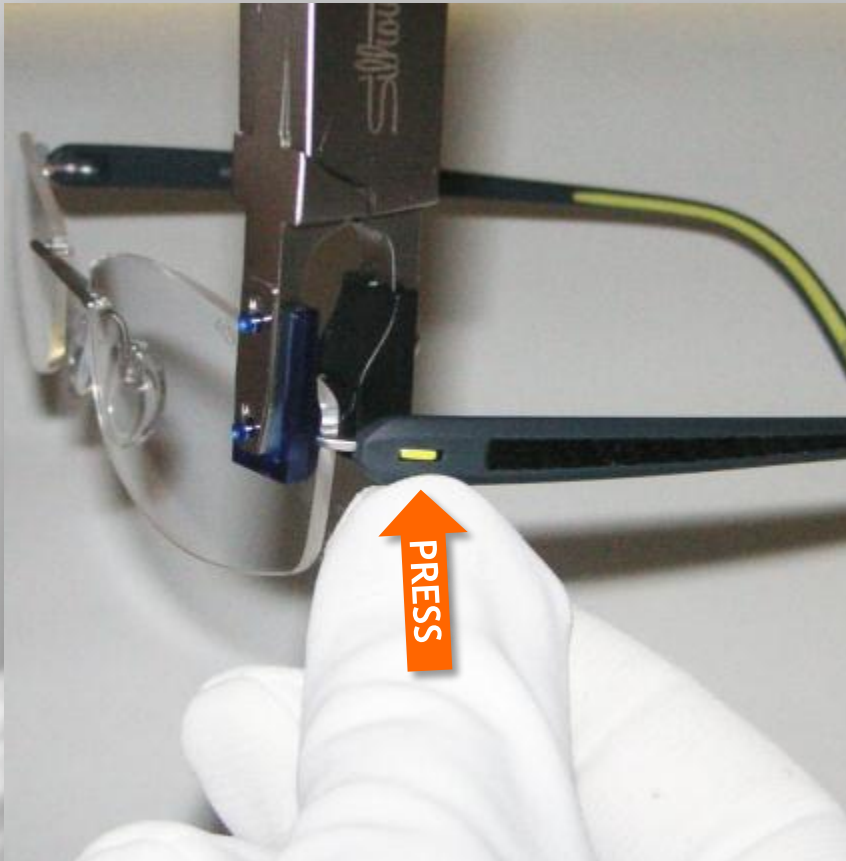


Enclose temple edge firmly and adjust inclination on titanium side part in requested direction.

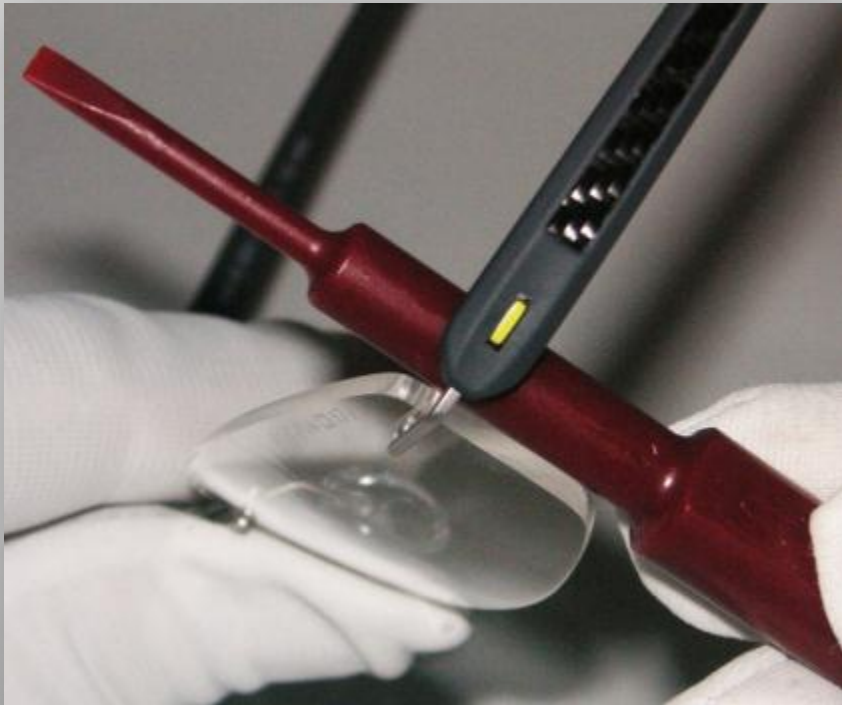
Adjust Temple Opening

Reduce

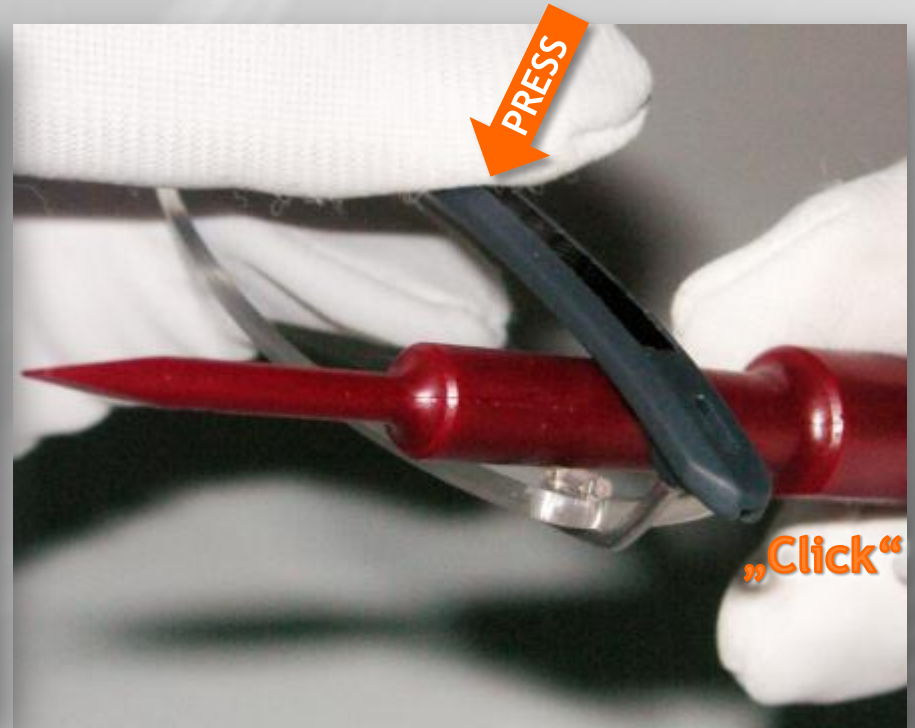
Enlarge



Temple Disassembly



Place disassembly tool where lens and temple meet as shown.



Close temple and press behind disassembly tool.

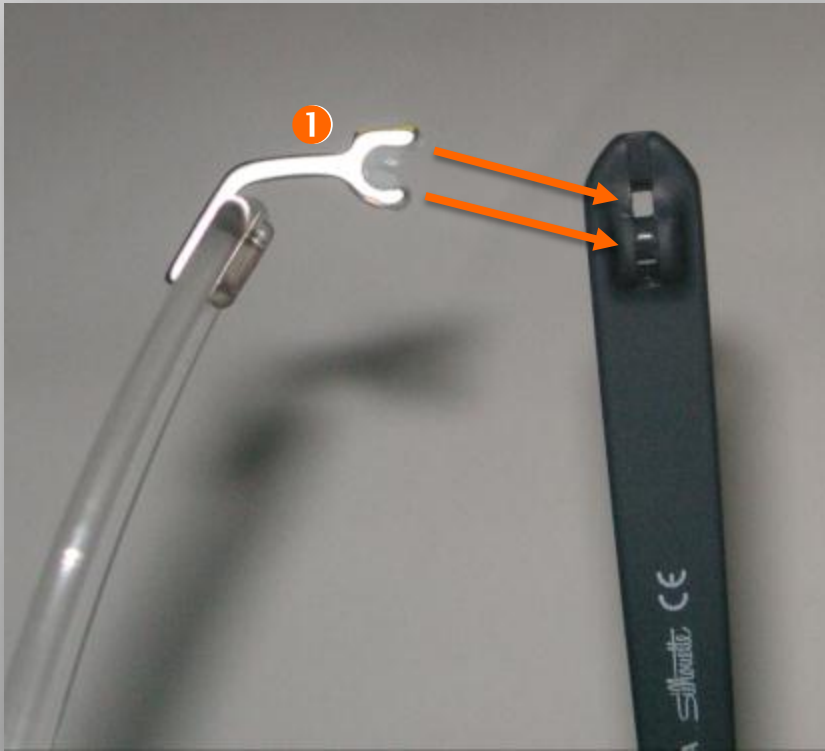
Temple will get loose with a click.

Greasing Hinge with Teflon



After cleaning grease inside loop of hinge with Teflon High Precision Lubrication mount temple.

Temple Assembly



Place hook and snap hinge at opening of SPX temple.



Apply counter pressure on frame side part.

Press SPX temple into titanium side part.

Adjust Temple Ergonomics

NOTE: A small gap between carbon foil and curve in SPX temple make adjustments of temple possible without damaging carbon decoration.

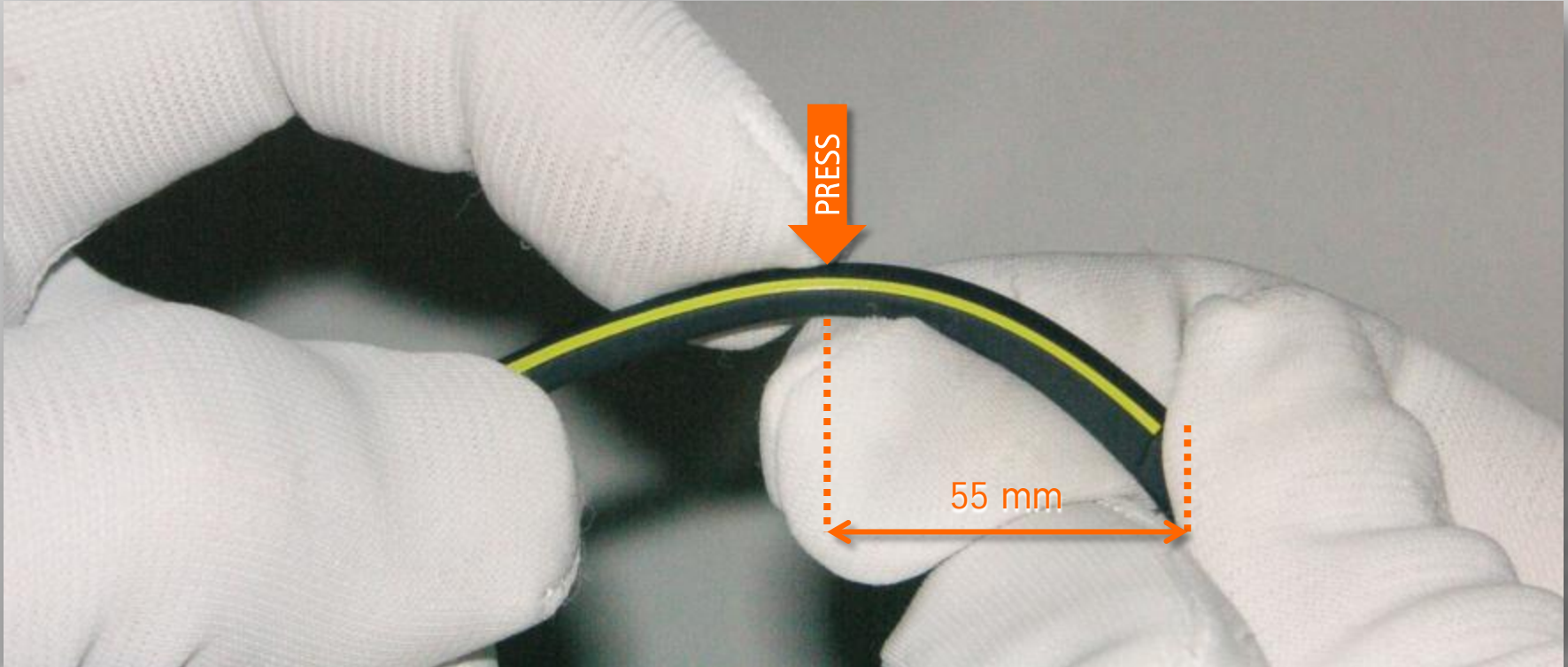


Warm SPX temple with air heater for a few seconds.



Shape temple and hold at room temperature until it has cooled down.

Adjust Temple End Behind Ear



- 55 mm Titanium temple inlay in temple end enables cold adjustment.
- Curve temple in large movements. Apply counter pressure from above to counteract inlay coming through from inside.
- Never bend!